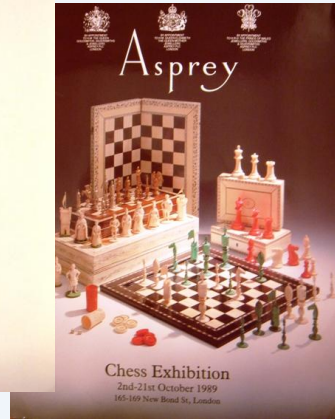
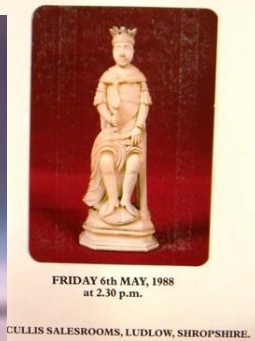
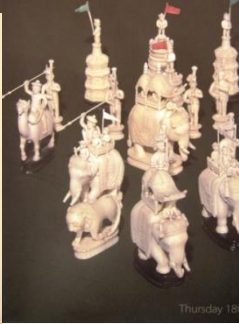
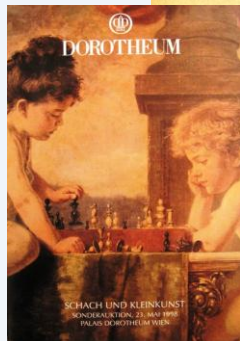
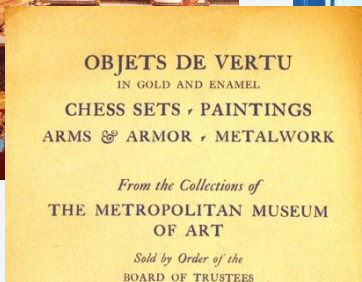
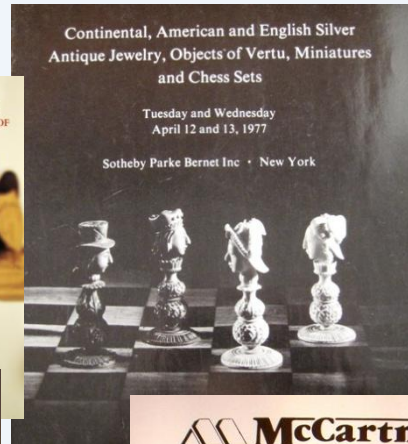
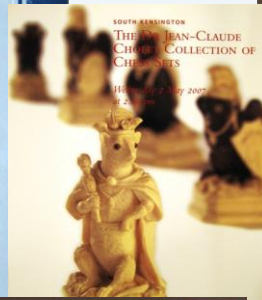
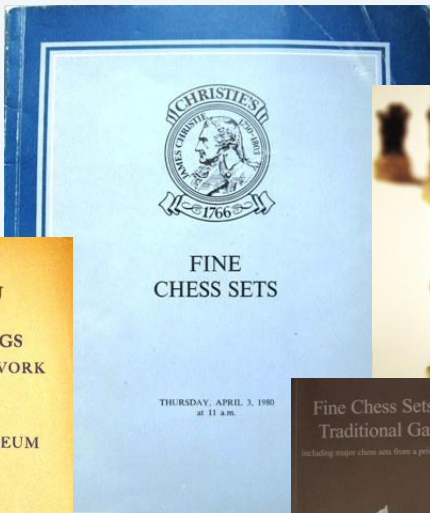
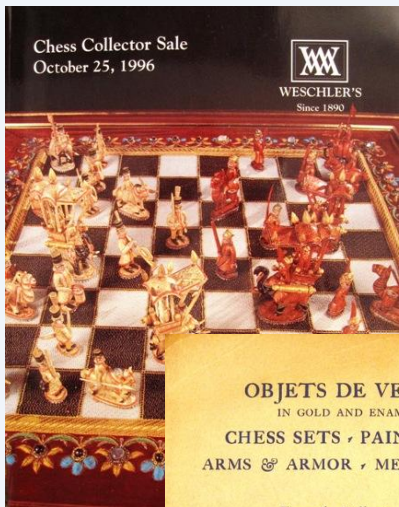


Chess Auction Catalog Project

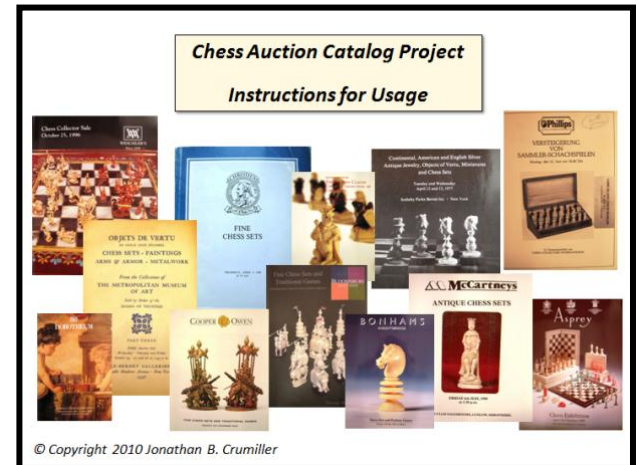
Instructions for Usage



This instruction manual is intended to help you use the Catalog Project spreadsheet. Please send your comments and feedback on the Catalog Project spreadsheet and this instruction manual to me at jon@crumiller.com .

NOTES:

- These instructions are based on Microsoft Excel 2007. If you have a different version of Excel, then the screen snapshots will not match your version, but you should be able to use the same functional capabilities in your version of Excel.
- The spreadsheet includes only those auction lots that contain some type of chess-related item. (Chess variants such as Makrook, Shogi, and Tsiang Ki are included.)
- It is important to remember that auction lots can consist of multiple items, so each piece of lot-specific data may pertain to multiple items.



When you first open the CatalogProject.xls file, the entire list of auction lots appears:

	A	B	C	D	E	F	G	H	I	J	K	L	M	N	O	P	Q	R	S
1	© Copyright 2010 Jonathan B. Crumiller																		
2	v1.1 06-Jun-2010																		
3	CatalogDate	AuctionHouse	Lot	ItemType	Pattern	Material	Country	Manufa	Keywords	Size_cm	DateStart	DateEnd	PriceGBP	PriceUSD	TodaysGBP	TodaysUSD	Lot_Same	LotPhoto	Lot
4	5/19/2010	Bonhams	19	travel-set and	In Statu Qu	bone / mahc	English	Jaques	red vs natura	23	1870	1900	£300	\$433	£300	\$433	19	http://www.bonhams.com	
5	5/19/2010	Bonhams	20	board		rosewood, r	English	Jaques	rosewood an	46	1800	1900	£696	\$1,005	£696	\$1,005	20	http://www.bonhams.com	
6	5/19/2010	Bonhams	21	set	Staunton	boxwood an	English	Jaques	both kings st	7			£240	\$346	£240	\$346	21	Y	http://www.bonhams.com
7	5/19/2010	Bonhams	22	board		papier mach	English	Leuchars	Gothic taste /	52	1855	1865	£432	\$624	£432	\$624	22		http://www.bonhams.com
8	5/19/2010	Bonhams	23	set	Staunton	boxwood and ebony			weighted / in	10			£600	\$866	£600	\$866	23	Y	http://www.bonhams.com
9	5/19/2010	Bonhams	24	travel-set		bone / mahc	English		red vs natura	18	1800	1900	£36	\$52	£36	\$52	24		http://www.bonhams.com
10	5/19/2010	Bonhams	25	set and boar	Staunton	ivory / mahc	English	Jaques	club size / re	9.8			£6,000	\$8,660	£6,000	\$8,660	25	Y	http://www.bonhams.com
11	5/19/2010	Bonhams	26	set and book	Staunton	boxwood an	English	Jaques	weighted / w	9	1800	1900					26		http://www.bonhams.com
12	5/19/2010	Bonhams	27	set	Staunton	boxwood an	English	Jaques	weighted / w	9	1800	1900	£600	\$866	£600	\$866	27		http://www.bonhams.com
13	5/19/2010	Bonhams	28	travel-set		bone / mahc	English		red vs natura	20	1800	1900	£96	\$139	£96	\$139	28		http://www.bonhams.com
14	5/19/2010	Bonhams	29	set and boar	Staunton	bone / leath	English		red vs natura	7	1830	1900	£384	\$554	£384	\$554	29		http://www.bonhams.com
15	5/19/2010	Bonhams	30	set and boar	Staunton	ivory / lacqu	Chinese		red vs natura	8	1830	1900	£600	\$866	£600	\$866	30		http://www.bonhams.com
16	5/19/2010	Bonhams	31	set	Staunton	boxwood an	English	Jaques	weighted / w	11	1800	1900	£1,440	\$2,078	£1,440	\$2,078	31	Y	http://www.bonhams.com
17	5/19/2010	Bonhams	32	set	Staunton	boxwood an	English	Jaques	weighted / w	11	1885	1895	£1,680	\$2,425	£1,680	\$2,425	32		http://www.bonhams.com
18	5/19/2010	Bonhams	33	set	Staunton	boxwood an	English	Jaques	white king st	9	1885	1895	£456	\$658	£456	\$658	33		http://www.bonhams.com
19	5/19/2010	Bonhams	34	set	Staunton	boxwood an	English	Jaques	weighted / w	9	1858	1858	£720	\$1,039	£720	\$1,039	34		http://www.bonhams.com
20	5/19/2010	Bonhams	35	set	Staunton	boxwood an	English	Jaques	weighted / bc	10	1955	1965	£780	\$1,126	£780	\$1,126	35		http://www.bonhams.com
21	5/19/2010	Bonhams	36	travel-set	In Statu Qu	bone / mahc	English	Jaques	red vs natura	24	1865	1875					36		http://www.bonhams.com
22	5/19/2010	Bonhams	37	travel-set	In Statu Qu	bone / mahc	English	Jaques	red vs natura	25	1865	1875	£360	\$520	£360	\$520	37		http://www.bonhams.com
23	5/19/2010	Bonhams	38	travel-set	In Statu Qu	bone / mahc	English	Jaques	red vs natura	42	1875	1885	£1,560	\$2,252	£1,560	\$2,252	38		http://www.bonhams.com
24	5/19/2010	Bonhams	39	timer		mahogany, r	English	Jaques	Congress Che	31	1870	1900	£1,080	\$1,559	£1,080	\$1,559	39	Y	http://www.bonhams.com
25	5/19/2010	Bonhams	41	set	Staunton	ivory	English	Jaques	red vs natura	9	1800	1900	£2,280	\$3,291	£2,280	\$3,291	41		http://www.bonhams.com
26	5/19/2010	Bonhams	42	set	Staunton	boxwood an	English	Jaques	white king st	9	1800	1900	£1,620	\$2,338	£1,620	\$2,338	42		http://www.bonhams.com
27	5/19/2010	Bonhams	43	set	Staunton	ivory	Indian		probably Ang	7.5	1830	1900	£600	\$866	£600	\$866	43		http://www.bonhams.com
28	5/19/2010	Bonhams	44	set	Staunton	boxwood an	English		one WN repl	9	1925	1935					44		http://www.bonhams.com
29	5/19/2010	Bonhams	45	travel-set	In Statu Qu	bone / mahc	English	Jaques	red vs natura	23	1800	1900	£240	\$346	£240	\$346	45		http://www.bonhams.com

Each field from **ItemType** to **TodaysUSD** has a little pull-down box next to it. These pull-down boxes allow filtering of the auction lots using specified criteria.

	CatalogDate	AuctionHouse	Lot	ItemType	Pattern	Material	Country	Manufact	Keywords	Size_cm	DateStart	DateEnd	PriceG	PriceU	TodayG	TodayUSD	Lot	Same	LotPhoto	Lot
3																				
4	5/19/2010	Bonhams	19	travel-set	ant in Statu	Qu bone / manc	English	Jaques	red vs natura	25	1870	1900	£300	\$433	£300	\$433	19		http://www.b	

Let's see how to use these filters by taking an example. Suppose we want to locate all auction lots for Jaques Staunton club-size ivory sets.

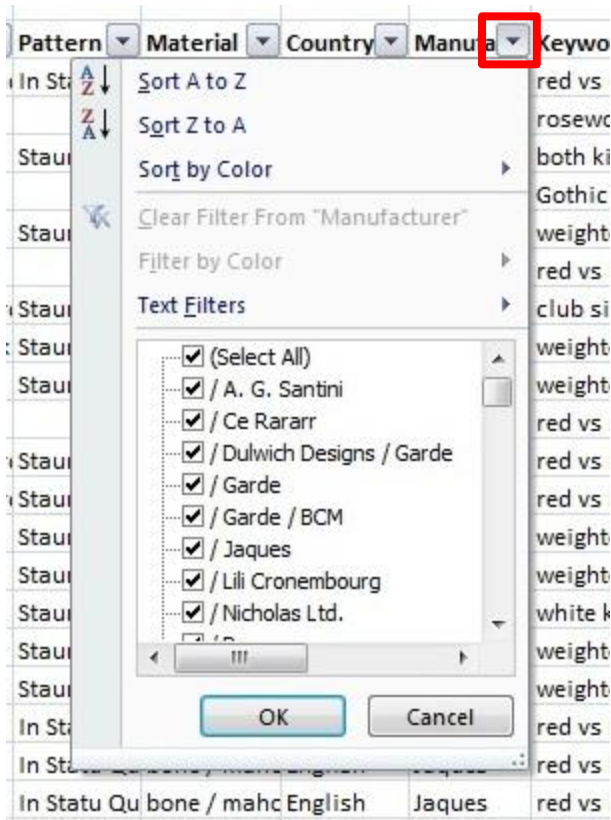
Therefore the criteria we would use is:

Manufacturer	contains	<u>Jaques</u>
Pattern	contains	<u>Staunton</u>
Size_cm	is greater than	<u>10.5</u>
Material	contains	<u>ivory</u>
ItemType	contains	<u>set</u>

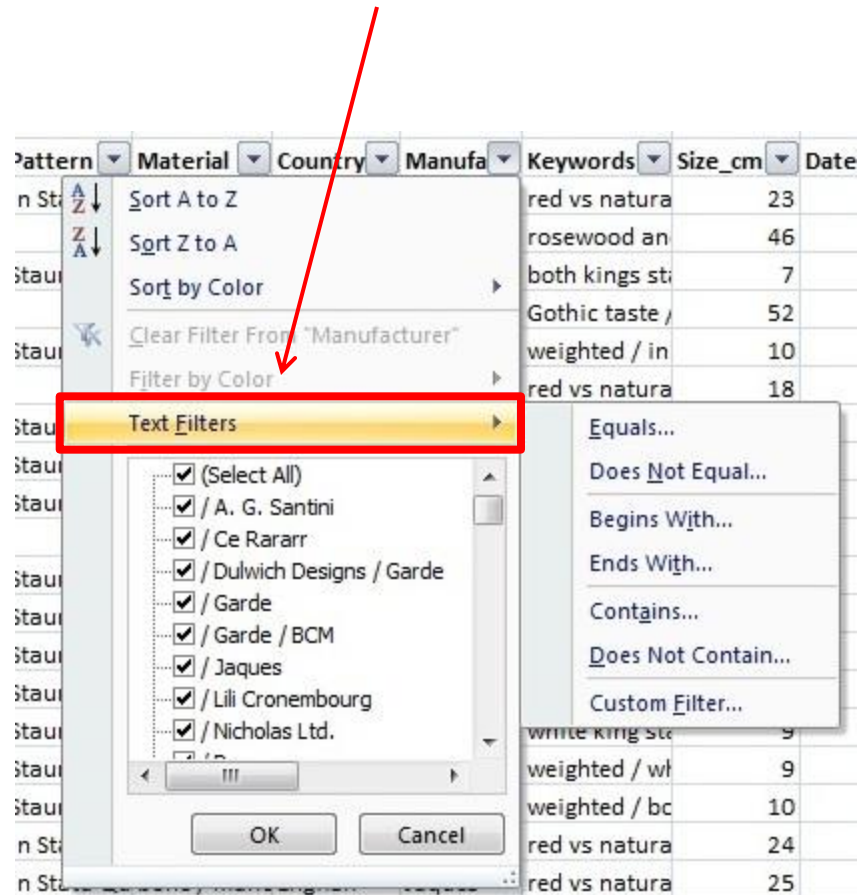
Why would we use the 'contains' verb rather than 'is equal to'? The reason is that some auction lots consist of multiple items, and in those cases the descriptive text for the items is contained within each column. For example, if an auction lot consisted of a Jaques Staunton club-size ivory set and a Leuchars board, then **ItemType** would be "set and board" (as opposed to just "set"). Hence we need to say that the **ItemType** 'contains' set. The same logic applies to other fields.

So let's proceed by entering the filter criteria. First we'll select Jaques as the Manufacturer.

1 Click on the down-arrow in the **Manufacturer** column:

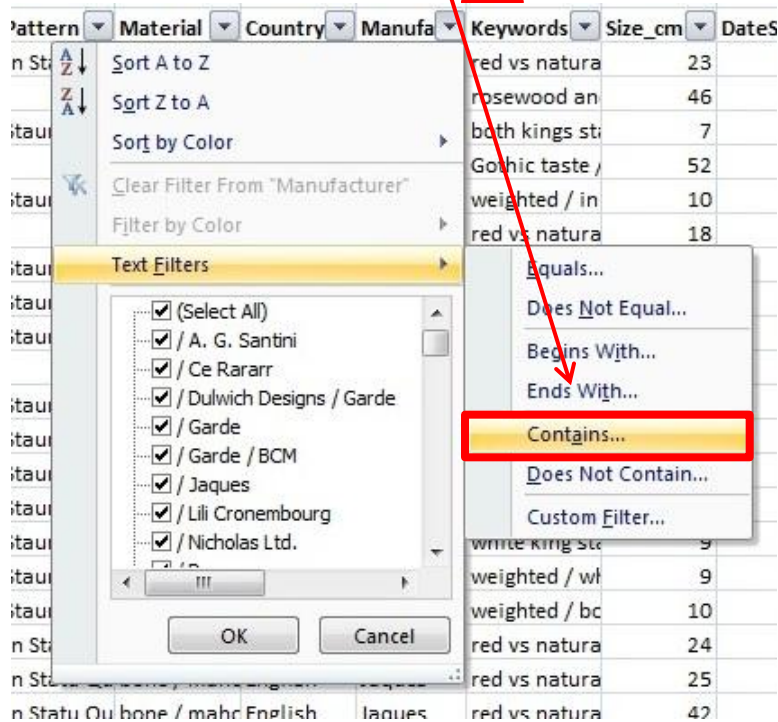


2 Hover the mouse over **Text Filters**:

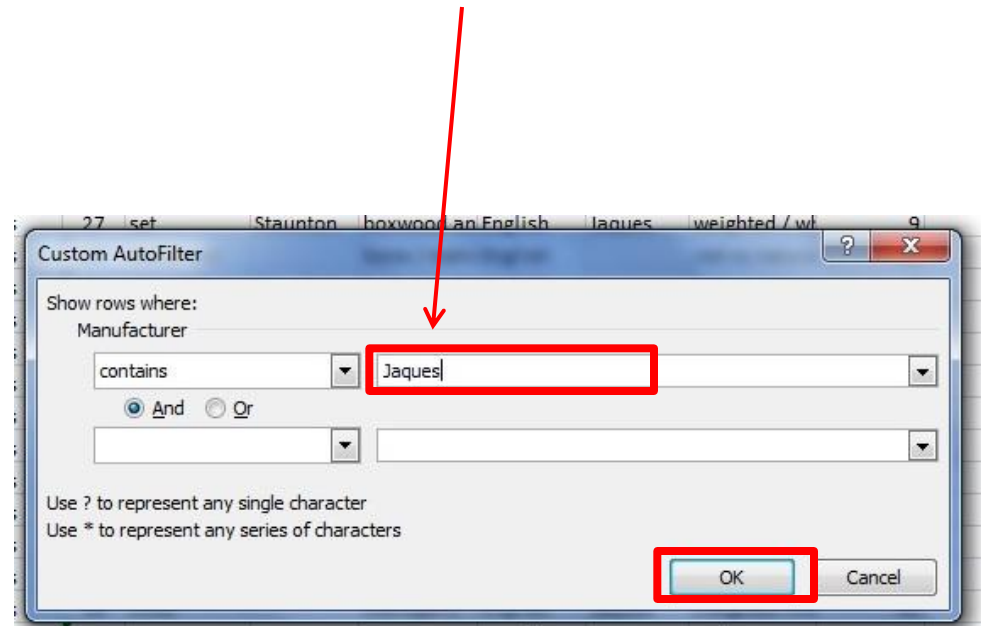


So let's proceed by entering the filter criteria. First we'll select Jaques as the Manufacturer.

3 Click on **Contains...**



Type in **Jaques** and press **Enter** (or click **OK**):



The spreadsheet automatically filters the auction lots and shows only those lots with **Jaques** contained within the **Manufacturer** field. Repeat the process to specify **ItemType** contains **set**, **Pattern** contains **Staunton**, etc. This is easy and straightforward, and it takes minimal time and effort.

1	© Copyright 2010 Jonathan B. Crumiller																											
3	CatalogDate	AuctionHouse	Lot	ItemType	Pattern	Material	Country	Manufa	Keywords	Size_cm	DateStart	DateEnd	PriceGBP	PriceUSD	TodaysGBP	TodaysUSD	Lot	Same	LotPhoto									
420	4/29/2009	Bonhams	86	set	Staunton	ivory	English	Jaques	red vs natura	11	1800	1900	£16,800	\$24,538	£16,792	\$25,133	86	Y	http://www									
1429	5/2/2007	Christies	29A	set	Staunton	ivory	English	Jaques	white king st	11.5	1855	1855	£19,200	\$38,421	£20,752	\$40,719	29A	Y	http://www									
3663	5/15/2001	Phillips	37	set	Staunton	ivory	English	Jaques	red vs natura	11	1800	1900					37		http://www									
5024	5/12/1997	Phillips	20	set	Staunton	ivory	English	Jaques	red vs natura	11.3	1882	1882					20	Y	http://www									
5383	5/13/1996	Phillips	50	set	Staunton	ivory	English	Jaques	club size / se	11.3	1830	1870					50	Y	http://www									
6151	9/27/1994	Christies	66	set	Staunton	ivory	English	Jaques / Le	weighted "clu	11.5	1855	1865					66		http://www									
6282	5/17/1994	Bonhams	72	set and boar	Staunton	ivory	English	Jaques	red vs natura	11.1			£5,060	\$7,609	£7,803	\$11,280	72	Y	http://www									
6570	11/15/1993	Phillips	12	set	Staunton	ivory	English	Jaques	large club siz	11.5	1800	1900	£7,475	\$11,149	£11,811	\$16,951	12		http://www									
6694	9/21/1993	Christies	32	set	Staunton	ivory	English	Jaques	ivory vs red s	11.5	1855	1865	£7,700	\$11,812	£12,167	\$17,959	32											
6811	5/17/1993	Phillips	180	set	Staunton	ivory	English	Jaques / Lu	large club siz	11	1845	1855	£5,060	\$7,797	£7,995	\$11,855	180		http://www									
7077	5/26/1992	Phillips	14	set	Staunton	ivory	English	Jaques	red vs natura	11	1855	1855	£4,180	\$7,631	£6,717	\$11,950	14		http://www									
7288	6/11/1991	Phillips	103	set	Staunton	ivory	English	Jaques	red vs natura	11	1875	1875	£2,640	\$4,396	£4,418	\$7,090	103		http://www									
7656	6/13/1988	Phillips	9	set	Staunton	ivory	English	Jaques	red vs natura	11	1800	1900					9		http://www									
7961	5/21/1986	Christies	297	set	Staunton	ivory	English	Jaques	natural vs rei	11							297											
8027	5/20/1986	Phillips	190	set	Staunton	ivory	English	Jaques	red vs natura	11	1865	1875	£1,815	\$2,755	£4,109	\$5,522	190	Y	http://www									
9353																												

As a result, we see all Jaques Staunton club-size ivory sets.

Now let's see the actual catalog page for one of the lots. The three columns for this are Same, LotPhoto, and LotText (see below). Note that we have scrolled the spreadsheet to the right to reveal these columns.

	E	F	G	H	I	J	K	L	M	N	O	P	Q	R	S	T	U	V	W	X
1	v1.1	06-Jun-2010																		
3	Pattern	Material	Country	Manufa	Keywords	Size_cm	DateStart	DateEnd	PriceGBP	PriceUSD	TodaysGBP	TodaysUSD	Lot	Same	LotPhoto	LotText	Size	Dating	Catal LotSort	
420	Staunton	ivory	English	Jaques	red vs natura	11	1800	1900	£16,800	\$24,538	£16,792	\$25,133	86	Y	http://www	http://w	11 cm	19th	93 000086	
1429	Staunton	ivory	English	Jaques	white king sti	11.5	1855	1855	£19,200	\$38,421	£20,752	\$40,719	29A	Y	http://www	http://w	11.5 cm	1855	87 000029A	
3663	Staunton	ivory	English	Jaques	red vs natura	11	1800	1900					37		http://www	http://w	11 cm	19th	10 000037	
5024	Staunton	ivory	English	Jaques	red vs natura	11.3	1882	1882					20	Y	http://www	http://w	11.3 cm	1882	65 000020	
5383	Staunton	ivory	English	Jaques	club size / se	11.3	1830	1870					50	Y	http://www	http://w	11.3 cm	mid-19th	61 000050	
6151	Staunton	ivory	English	Jaques / Le	weighted "clu	11.5	1855	1865					66		http://www	http://w	11.5 cm	1860	28 000066	
6282	Staunton	ivory	English	Jaques	red vs natura	11.1			£5,060	\$7,609	£7,803	\$11,280	72	Y	http://www	http://w	11.1 cm		57 000072	
6570	Staunton	ivory	English	Jaques	large club siz	11.5	1800	1900	£7,475	\$11,149	£11,811	\$16,951	12		http://www	http://w	11.5 cm	19th	53 000012	
6694	Staunton	ivory	English	Jaques	ivory vs red s	11.5	1855	1865	£7,700	\$11,812	£12,167	\$17,959	32		http://www	http://w	11.5 cm	1860	24 000032	
6811	Staunton	ivory	English	Jaques / Lu	large club siz	11	1845	1855	£5,060	\$7,797	£7,995	\$11,855	180		http://www	http://w	11 cm	1850	52 000180	
7077	Staunton	ivory	English	Jaques	red vs natura	11	1855	1855	£4,180	\$7,631	£6,717	\$11,950	14		http://www	http://w	11 cm	1855	99 000014	
7288	Staunton	ivory	English	Jaques	red vs natura	11	1875	1875	£2,640	\$4,396	£4,418	\$7,090	103		http://www	http://w	11 cm	1875	49 000103	
7656	Staunton	ivory	English	Jaques	red vs natura	11	1800	1900					9		http://www	http://w	11 cm	19th	32 000009	
7961	Staunton	ivory	English	Jaques	natural vs rei	11							297		http://www	http://w	11 cm		36 000297	
8027	Staunton	ivory	English	Jaques	red vs natura	11	1865	1875	£1,815	\$2,755	£4,109	\$5,522	190	Y	http://www	http://w	11 cm	1870	35 000190	
9353																				
9354																				
9355																				
9356																				
9357																				
9358																				
9359																				
9360																				
9361																				
9362																				
9363																				

Click on the **LotPhoto** link or the **LotText** link to see the lot's photo or lot's text, respectively. If the **Same** field has 'Y' in it, then the lot's photo is on the same catalog page as the lot's text.

	E	F	G	H	I	J	K	L	M	N	O	P	Q	R	S	T	U	V	W	X
1	v1.1 06-Jun-2010																			
3	Pattern	Material	Country	Manufa	Keywords	Size_cm	DateStart	DateEnd	PriceGBP	PriceUSD	TodaysGBP	TodaysUSD	Lot	Same	LotPhoto	LotText	Size	Dating	Catal	LotSort
420	Staunton	ivory	English	Jaques	red vs natura	11	1800	1900	£16,800	\$24,538	£16,792	\$25,133	86	Y	http://www	http://www	11 cm	19th	93	000086
1429	Staunton	ivory	English	Jaques	white king sti	11.5	1855	1855	£19,200	\$38,421	£20,752	\$40,719	29A	Y	http://www	http://www	11.5 cm	1855	87	000029A
3663	Staunton	ivory	English	Jaques	red vs natura	11	1800	1900					37		http://www	http://www	11 cm	19th	10	000037
5024	Staunton	ivory	English	Jaques	red vs natura	11.3	1882	1882					20	Y	http://www	http://www	11.3 cm	1882	65	000020
5383	Staunton	ivory	English	Jaques	club size / se	11.3	1830	1870					50	Y	http://www	http://www	11.3 cm	mid-19th	61	000050
6151	Staunton	ivory	English	Jaques / Le	weighted "clu	11.5	1855	1865					66		http://www	http://www	11.5 cm	1860	28	000066
6282	Staunton	ivory	English	Jaques	red vs natura	11.1			£5,060	\$7,609	£7,803	\$11,280	72	Y	http://www	http://www	11.1 cm		57	000072
6570	Staunton	ivory	English	Jaques	large club siz	11.5	1800	1900	£7,475	\$11,149	£11,811	\$16,951	12		http://www	http://www	11.5 cm	19th	53	000012
6694	Staunton	ivory	English	Jaques	ivory vs red s	11.5	1855	1865	£7,700	\$11,812	£12,167	\$17,959	32		http://www	http://www	11.5 cm	1860	24	000032
6811	Staunton	ivory	English	Jaques / Lu	large club siz	11	1845	1855	£5,060	\$7,797	£7,995	\$11,855	180		http://www	http://www	11 cm	1850	52	000180
7077	Staunton	ivory	English	Jaques	red vs natura	11	1855	1855	£4,180	\$7,631	£6,717	\$11,950	14		http://www	http://www	11 cm	1855	99	000014
7288	Staunton	ivory	English	Jaques	red vs natura	11	1875	1875	£2,640	\$4,396	£4,418	\$7,090	103		http://www	http://www	11 cm	1875	49	000103
7656	Staunton	ivory	English	Jaques	red vs natura	11	1800	1900					9		http://www	http://www	11 cm	19th	32	000009
7961	Staunton	ivory	English	Jaques	natural vs rei	11							297		http://www	http://www	11 cm		36	000297
8027	Staunton	ivory	English	Jaques	red vs natura	11	1865	1875	£1,815	\$2,755	£4,109	\$5,522	190	Y	http://www	http://www	11 cm	1870	35	000190
9353																				
9354																				
9355																				
9356																				
9357																				
9358																				
9359																				
9360																				
9361																				
9362																				
9363																				

Having clicked on the link, your web browser will launch to display the catalog page. When you have finished examining the page, you can close your web browser.

10.jpg (1980x1284)

http://www.chessreference.com/Catalogs/2009-04-29_Bonhams/10.jpg

ACC Statcounter ChessAntique eBay Ebay UK Kaissa ChessRef Misc BigTime Confluence CNN MSNBC WSJ Dictionary

80

81

82

83

84

85

86

87

88

89

90

Jaques, Staunton and Travelling Chess Sets

80 A papier-mâché "Cartongierre" chess box, by Jaques, from the design by Joseph L. Williams, 19th century, the underside with a yellow label, "Jaques London", together with a 19th century wooden chess box, the underside of the lid with a Jaques yellow label (2), the Cartongierre box 20cm wide, the wooden box 17.5cm wide. £300 - 500

Provenance: The Martine Jeanin Gallery, 13, rue Jacob, Paris.

81 A "Staunton Pattern" boxwood and ebony travelling chess set and board of large size, England, late 19th century, the pegged pieces in a rosewood, boxwood and mahogany inlaid board box, the interior for backgammon, with thirty turned backgammon pieces, the king 5cm high, the pawn 3cm high. £200 - 300

82 A "Staunton Pattern" boxwood and ebony chess set, in a wooden box with a sliding lid, together with a 1930s boxwood and mahogany framed chess board marked "Jaques London" (2), the king 7.5cm high, the pawn 4cm high, the board 38cm wide. £200 - 300

83 A Staunton 4.4 inch "1850" weighted boxwood and ebony chess set, by Jaques, in a limited edition of 100, the white king stamped: "Jaques London", each chessman with a leather plaque to the underside of the base stamped in gilt: "Jaques... Staunton... Chessman", (two extra queens), in a fitted mahogany box with a green facsimile label, brass plaque inscribed: "Jaques London", and key, together with a mahogany and boxwood chess board by Jaques, stamped: "Jaques London" on the frame (2), the king 12cm high, the pawn 6cm high, the box 36cm wide, the board 58cm wide. £1,000 - 1,500

84 A club-sized boxwood and rosewood chess board, by Jaques, late 19th century, the alternate squares in boxwood and rosewood, the frame stamped "Jaques London" (some water-staining to the corner), 51cm wide. £300 - 500

85 A "Staunton Pattern" ivory chess set, England, late 19th century, one side stained red, the other side left natural, in a mahogany box lined with green baize, the king 8cm high, the pawn 3.5cm high. £200 - 300

86 A Staunton ivory chess set, Jaques, 19th century, one side stained red, the other side left natural, the white king stamped: "Jaques London" on the underside of the base, in a papier-mâché Cartongierre box with a red label signed: "Jaques London" and a stepped ebony base (2), the king 11cm high, the pawn 5.5cm high. £2,000 - 3,000

87 A bone travelling chess set, England, circa 1860, the bone pegged pieces in the "Old English Pattern", and stained red and left natural, in a mahogany board/box with ebony and boxwood stringing, the board 30cm wide, the king 6cm high, the pawn 3cm high. £120 - 160

88 A "Staunton Pattern" boxwood and ebony chess set, France, late 19th century, the king 8cm high, the pawn 5cm high, together with a French Regence boxwood and ebony chess set, circa 1930, the king 9cm, the pawn 4cm high, in a wooden box with a sliding lid, and an English bone "Barlycorn Pattern" chess set in a wooden box (3). £100 - 150

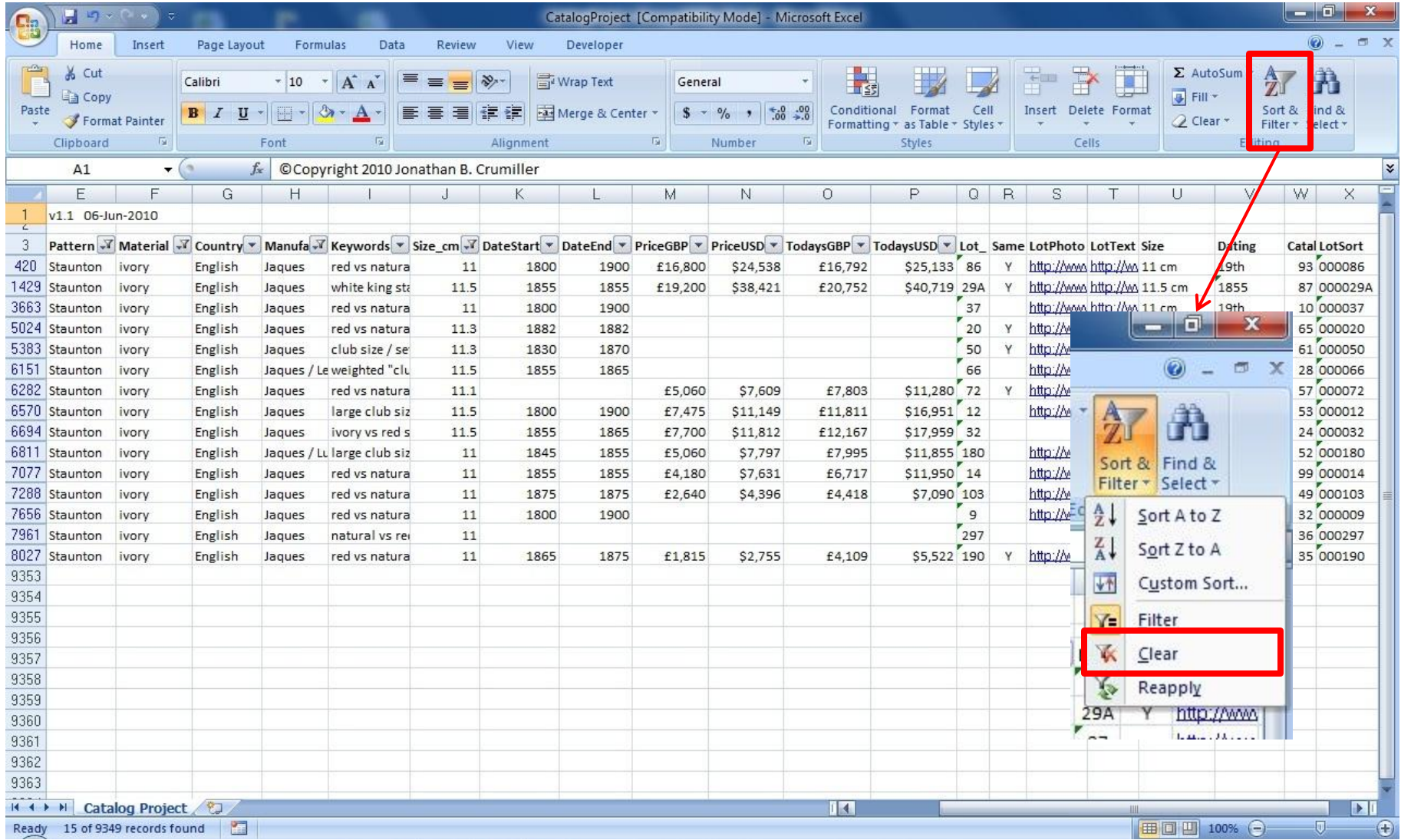
Provenance: The Martine Jeanin Gallery, 13, rue Jacob, Paris.

89 An "in Statu Quo" travelling chess set, Jaques, late 19th century, the bone pieces stained red and left natural, in a mahogany board/box stamped: "In Statu Quo... C. Ellis Bone... Jaques... London", with a locking mechanism, in a blue leatherette slipcase (scuffed) (2), 22cm wide. £200 - 300

90 An "in Statu Quo" travelling set of large size, by Jaques, late 19th century, the bone chessmen stained red and left natural in a mahogany board stamped: "Jaques & Son... Paris... In Statu Quo... London", and with a locking mechanism, 32cm wide. £600 - 800

Chess, Playing Cards and Games 21

If you want to initiate a new filter, you'll need to clear out the criteria from the current filter.



When the filter is cleared, all auction lots reappear.

CatalogDate	AuctionHouse	Lot	ItemType	Pattern	Material	Country	Manufa	Keywords	Size_cm	DateStart	DateEnd	PriceGBP	PriceUSD	TodaysGBP	TodaysUSD	Lot	Same	LotPhoto	L		
5/19/2010	Bonhams	19	travel-set an	In Statu Qu	bone / mahc	English	Jaques	red vs natura	23	1870	1900	£300	\$433	£300	\$433	19		http://www.h			
5/19/2010	Bonhams	20	board		rosewood, n	English	Jaques	rosewood an	46	1800	1900	£696	\$1,005	£696	\$1,005	20		http://www.h			
5/19/2010	Bonhams	21	set	Staunton	boxwood an	English	Jaques	both kings st	7			£240	\$346	£240	\$346	21	Y	http://www.h			
5/19/2010	Bonhams	22	board		papier mach	English	Leuchars	Gothic taste /	52	1855	1865	£432	\$624	£432	\$624	22		http://www.h			
5/19/2010	Bonhams	23	set	Staunton	boxwood and ebony			weighted / in	10			£600	\$866	£600	\$866	23	Y	http://www.h			
5/19/2010	Bonhams	24	travel-set		bone / mahc	English		red vs natura	18	1800	1900	£36	\$52	£36	\$52	24		http://www.h			
5/19/2010	Bonhams	25	set and boar	Staunton	ivory / mahc	English	Jaques	club size / re	9.8			£6,000	\$8,660	£6,000	\$8,660	25	Y	http://www.h			
5/19/2010	Bonhams	26	set and book	Staunton	boxwood an	English	Jaques	weighted / wh	9	1800	1900	£600	\$866	£600	\$866	26		http://www.h			
5/19/2010	Bonhams	27	set	Staunton	boxwood an	English	Jaques	weighted / wh	9	1800	1900	£600	\$866	£600	\$866	27		http://www.h			
5/19/2010	Bonhams	28	travel-set		bone / mahc	English		red vs natura	20	1800	1900	£96	\$139	£96	\$139	28		http://www.h			
5/19/2010	Bonhams	29	set and boar	Staunton	bone / leath	English		red vs natura	7	1830	1900	£384	\$554	£384	\$554	29		http://www.h			
5/19/2010	Bonhams	30	set and boar	Staunton	ivory / lacql	Chinese		red vs natura	8	1830	1900	£600	\$866	£600	\$866	30		http://www.h			
5/19/2010	Bonhams	31	set	Staunton	boxwood an	English	Jaques	weighted / wh	11	1800	1900	£1,440	\$2,078	£1,440	\$2,078	31	Y	http://www.h			
5/19/2010	Bonhams	32	set	Staunton	boxwood an	English	Jaques	weighted / wh	11	1885	1895	£1,680	\$2,425	£1,680	\$2,425	32		http://www.h			
5/19/2010	Bonhams	33	set	Staunton	boxwood an	English	Jaques	white king sta	9	1885	1895	£456	\$658	£456	\$658	33		http://www.h			
5/19/2010	Bonhams	34	set	Staunton	boxwood an	English	Jaques	weighted / wh	9	1858	1858	£720	\$1,039	£720	\$1,039	34		http://www.h			
5/19/2010	Bonhams	35	set	Staunton	boxwood an	English	Jaques	weighted / bc	10	1955	1965	£780	\$1,126	£780	\$1,126	35		http://www.h			
5/19/2010	Bonhams	36	travel-set	In Statu Qu	bone / mahc	English	Jaques	red vs natura	24	1865	1875			£360	\$520	£360	\$520	36		http://www.h	
5/19/2010	Bonhams	37	travel-set	In Statu Qu	bone / mahc	English	Jaques	red vs natura	25	1865	1875	£360	\$520	£360	\$520	37		http://www.h			
5/19/2010	Bonhams	38	travel-set	In Statu Qu	bone / mahc	English	Jaques	red vs natura	42	1875	1885	£1,560	\$2,252	£1,560	\$2,252	38		http://www.h			
5/19/2010	Bonhams	39	timer		mahogany, r	English	Jaques	Congress Che	31	1870	1900	£1,080	\$1,559	£1,080	\$1,559	39	Y	http://www.h			
5/19/2010	Bonhams	41	set	Staunton	ivory	English	Jaques	red vs natura	9	1800	1900	£2,280	\$3,291	£2,280	\$3,291	41		http://www.h			
5/19/2010	Bonhams	42	set	Staunton	boxwood an	English	Jaques	white king sta	9	1800	1900	£1,620	\$2,338	£1,620	\$2,338	42		http://www.h			
5/19/2010	Bonhams	43	set	Staunton	ivory	Indian		probably Ang	7.5	1830	1900	£600	\$866	£600	\$866	43		http://www.h			
5/19/2010	Bonhams	44	set	Staunton	boxwood an	English		one WN repla	9	1925	1935					44		http://www.h			
5/19/2010	Bonhams	45	travel-set	In Statu Qu	bone / mahc	English	Jaques	red vs natura	23	1800	1900	£240	\$346	£240	\$346	45		http://www.h			

Let's review the meanings and significance of each column within the spreadsheet.

	CatalogDate	AuctionHouse	Lot	ItemType	Pattern	Material	Country	Manufa	Keywords	Size_cm	DateStart	DateEnd	PriceGBP	PriceUSD	TodaysGBP	TodaysUSD	Lot	Same	LotPhoto	LotText
3	5/19/2010	Bonhams	19	travel-set an	in Statu Qu	bone / mahc	English	Jaques	red vs natura	23	1870	1900	£300	\$433	£300	\$433	19		http://www.bonhams.com	

- **CatalogDate** is the date of the catalog containing the auction lot within that row.
- **AuctionHouse** is the name of the auction house that held the auction in which this lot was put up for sale.
- **Lot** is the auction lot number within the catalog.
- **ItemType** contains the type(s) of the item(s) in the auction lot. An auction lot may list one item or it may list multiple items.
- **Pattern** applies mainly to chess sets. Patterns include Staunton, Burmese, John, Chinese, Vizagapatam, Disc, and many other types. I have specially categorized some patterns.
- **Material** indicates what material(s) the lot item(s) are made of – e.g. wood, ivory, bone, etc.
- **Country** is the country (or countries) that the lot item(s) are attributed to.
- **Manufacturer** shows manufacturer and/or retailer.
- **Keywords** is a freeform field that contains any significant keywords within the lot description.
- **Size_cm** is the king size for sets or board size for boards. All sizes have been converted to centimeters.
- **DateStart** and **DateEnd** are the starting and ending dates of the dating range as provided in the catalog. The actual dating text is given in one of the right-most columns (off the screen in these screen prints.)
- **PriceGBP** and **PriceUSD** is the hammer+premium price of the auction lot, at the time of the auction.
- **TodaysGBP** and **TodaysUSD** is the hammer+premium price of the auction lot adjusted for inflation. (GBP is adjusted using RPI; USD is adjusted using CPI. All exchange rates are as of the date of the auction.)
- **Lot** is the auction lot number within the catalog (i.e. this column is repeated here.) It is helpful to have the lot number near the LotPhoto and LotText fields, for reference purposes.
- **Same** indicates whether the catalog page containing the lot photo (if a photo exists) is the same catalog page as that containing the text for the lot. If “Y”, then LotPhoto or LotText brings up the same catalog page, hence no need to click on both links.
- **LotPhoto** (if it is not blank) is a link that brings up (in your web browser) the catalog page containing a photo of the lot.
The next several fields are not shown on the screen print, but they are available by scrolling along the spreadsheet row.
- **LotText** is a link that brings up (in your web browser) the catalog page containing the text for the lot.
- **Size** is the actual “lot size” text from the auction catalog.
- **Dating** is the actual “dating” text from the auction catalog.
- **CatalogKey** and **LotSort** are internal “key” fields for unique identification and sorting purposes.

When you close Excel, it will ask if you want to save your changes. If the only changes you've made are to view the auction lots using one or two filters, then you don't have any changes to save, and you can answer 'N'. However, if you have done something such as move columns around for your personal preferences, then you'll want to answer 'Y' to save those changes.

